



**GROCERY
DEVELOPMENT**

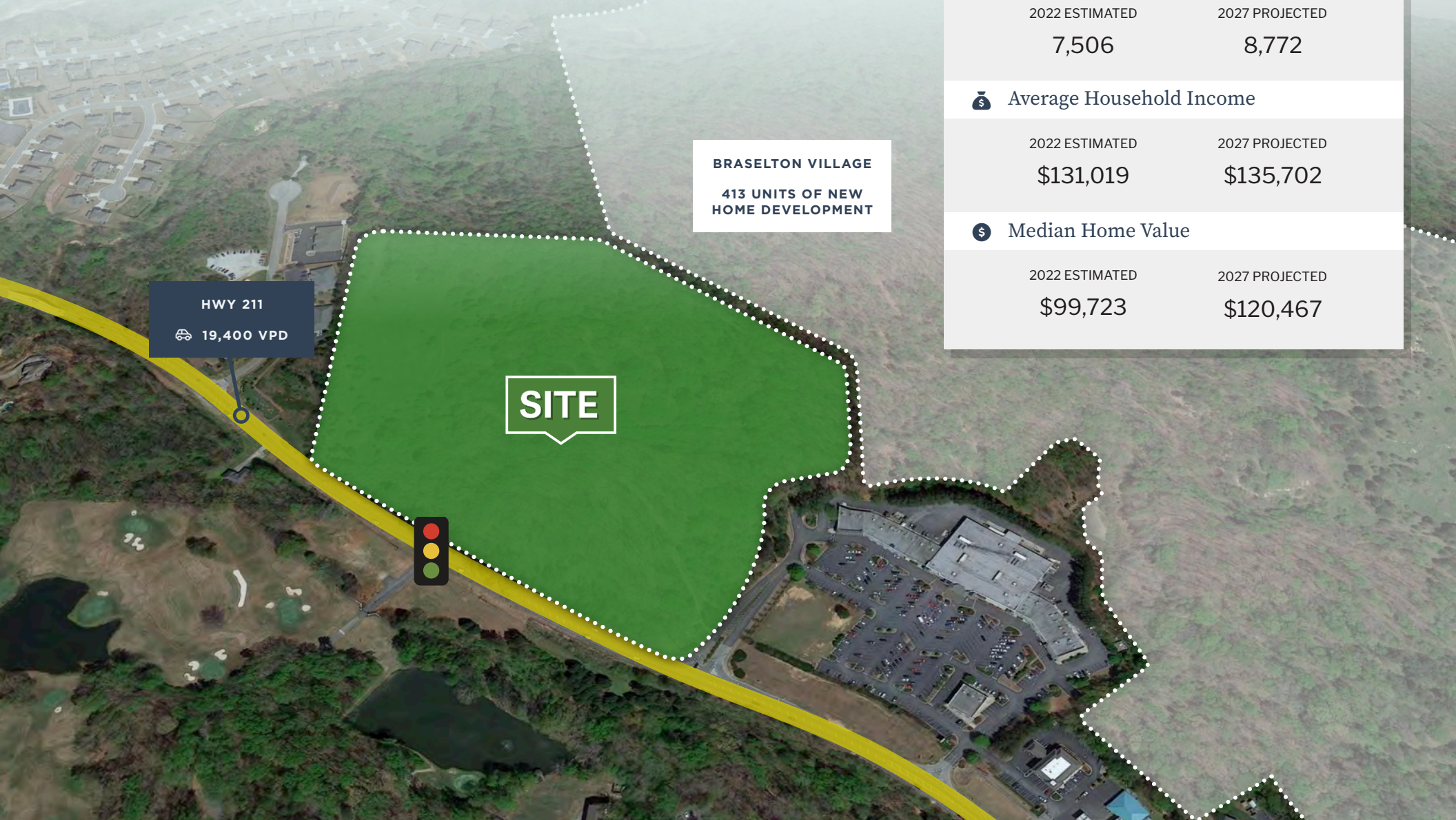
Braselton Village
2151 Highway 211 NW, Braselton, GA 30517

Delivering Early 2025

| | | | |
|--|---|--|---|
| <p>BRANCH PROPERTIES, LLC</p> | <p>ROBERT KRUMHOLZ 📞 (216) 408-5115 ✉ rkrumholz@branchprop.com</p> | <p>RICHARD WILES 📞 (404) 832-8924 ✉ rwiles@branchprop.com</p> | <p>SARABETH (LEWIS) BAUER 📞 (404) 832-8939 ✉ slewis@branchprop.com</p> |
|--|---|--|---|

i PROJECT INFORMATION

Braselton Village will be a 70,987 square foot shopping center located in Braselton, an affluent and vibrant suburb northeast of Atlanta. The shopping center will be anchored by a grocer and will also include a curated array of national, regional and local retail, food and service-oriented tenants. The center is well-located at a lighted intersection on one of the area's primary retail corridors, GA Hwy 211, and is less than one mile from Interstate 85. Within a three-mile radius of Braselton Village, there is a population of approximately 21,192 people with an average household income of over \$131,019, double the national average.



TRADE AREA (3 MILE RADIUS)

👤 Population

| 2022 ESTIMATED | 2027 PROJECTED | PROJECTED ANNUAL GROWTH |
|----------------|----------------|-------------------------|
| 21,192 | 24,303 | 2.9% |

🏠 Households

| 2022 ESTIMATED | 2027 PROJECTED |
|----------------|----------------|
| 7,506 | 8,772 |

💰 Average Household Income

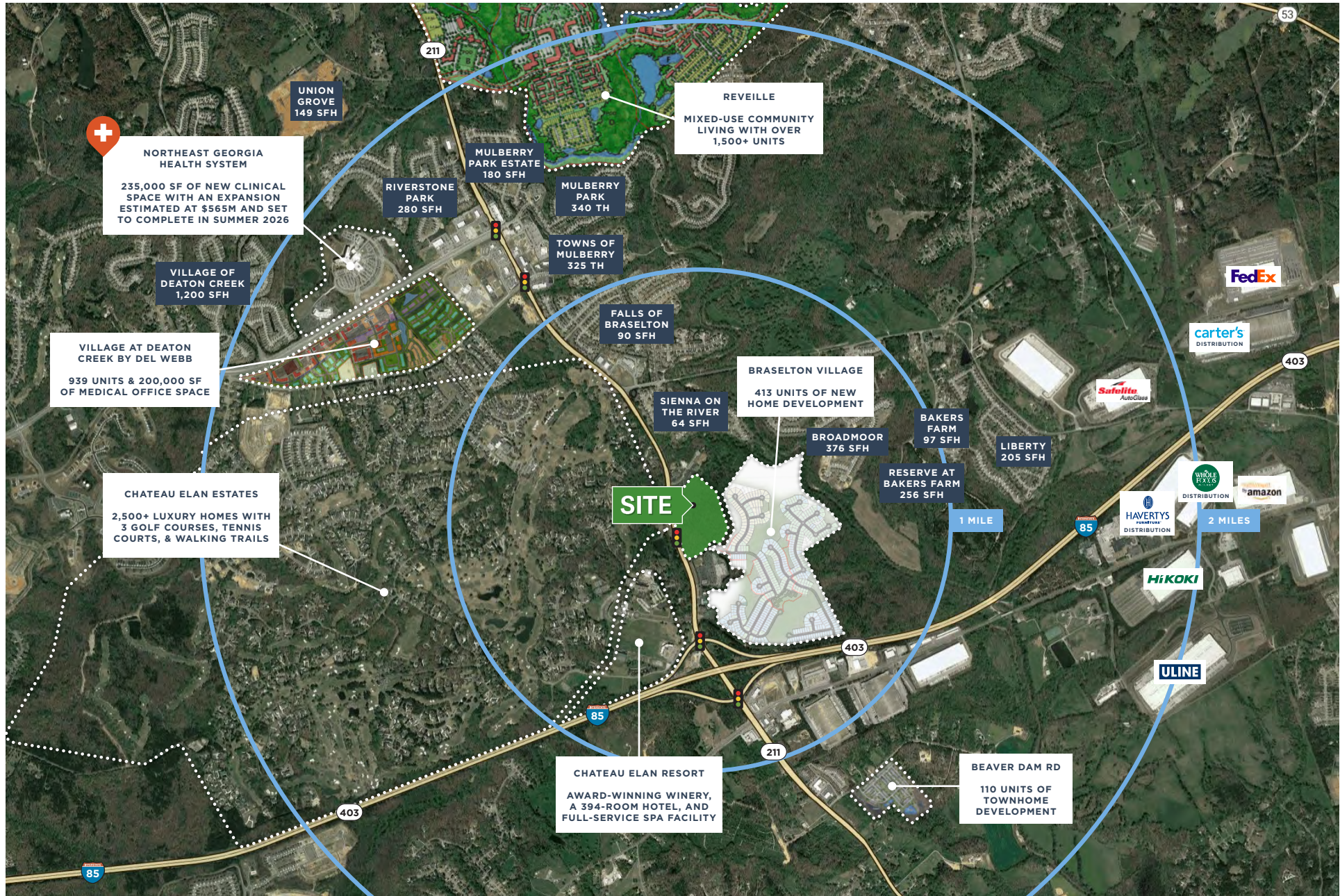
| 2022 ESTIMATED | 2027 PROJECTED |
|----------------|----------------|
| \$131,019 | \$135,702 |

💰 Median Home Value

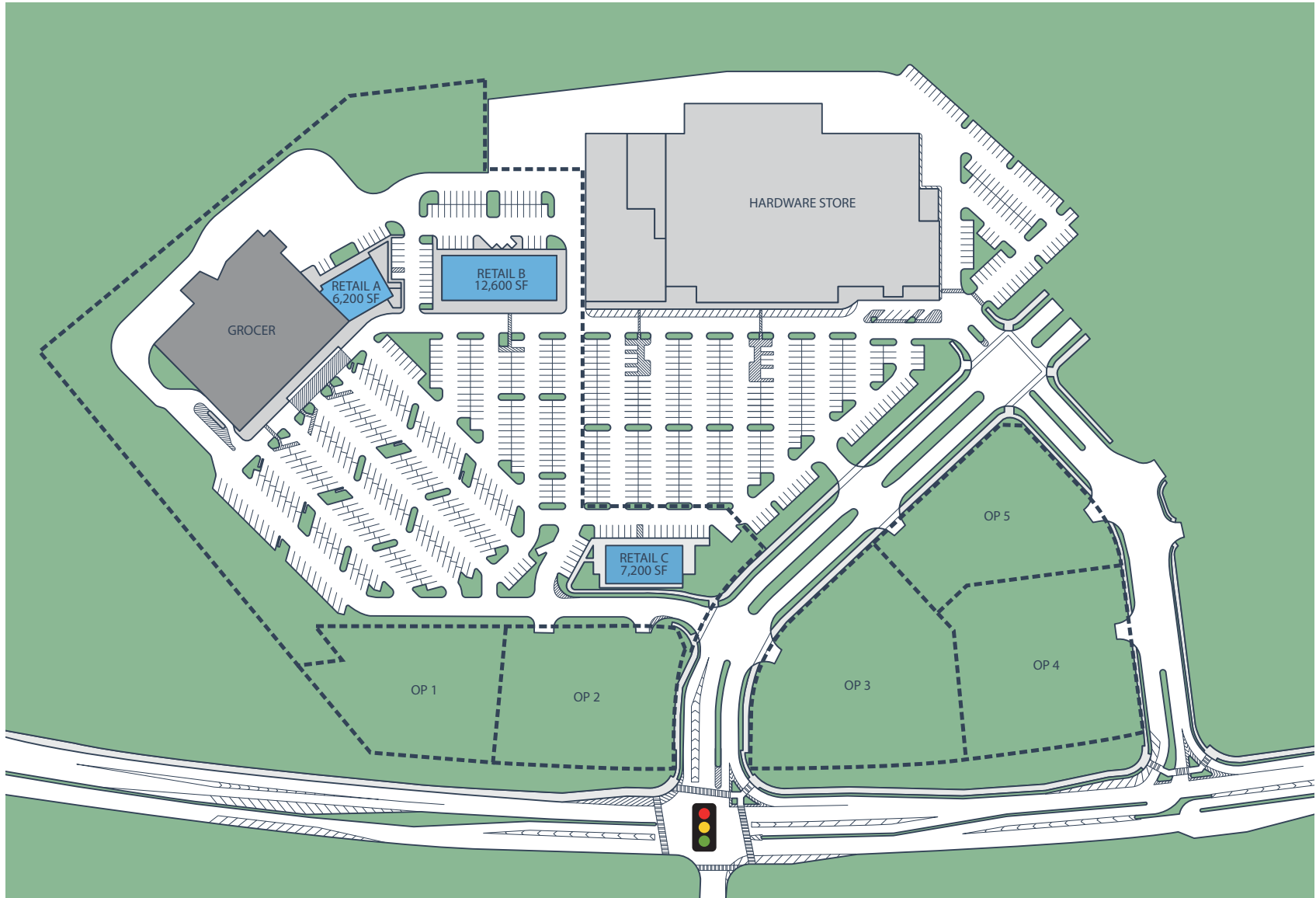
| 2022 ESTIMATED | 2027 PROJECTED |
|----------------|----------------|
| \$99,723 | \$120,467 |



i AREA MAP



i SITE MAP



 Available
 Leased

BRANCH
PROPERTIES, LLC

ROBERT KRUMHOLZ

📞 (216) 408-5115

✉ rkrumholz@branchprop.com

RICHARD WILES

📞 (404) 832-8924

✉ rwiles@branchprop.com

SARABETH (LEWIS) BAUER

📞 (404) 832-8939

✉ slewis@branchprop.com
